

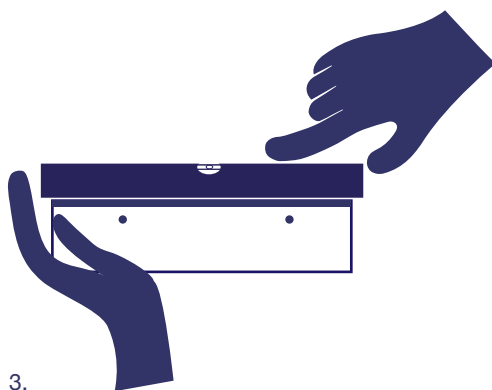
# Genesis Framing Split-Batten Hanging Guide

1. Determine the height at which your work will be hung (we recommend for standalone pieces a museum-standard height of 156cm to the center of the image). This should be measured from the floor upwards.

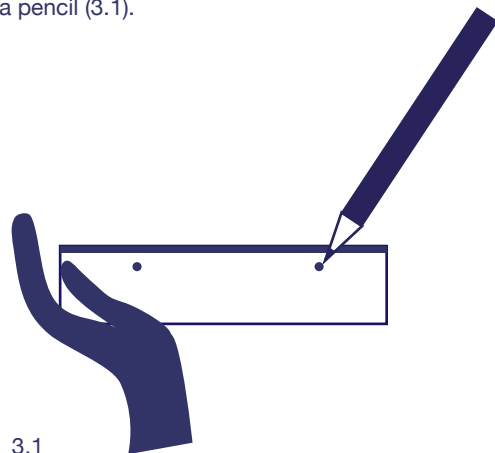
2. Measure the centre of the back of your work (bottom to top) and the distance between this measurement and that of the holes in the split-batten. This will inform the height at which you will be placing your screws, nails or hooks. If you are working at a height of 156cm and the holes in your split-batten are 10cm higher than the centre of your work, this will be a drilling height of 166cm.

3. Remove the split batten that is not attached with screws to your work. This will be attached to the wall. Place your split-batten at the height you will be hanging your work. Check this is straight with a spirit level before marking through the holes with a pencil (3.1).

1.



3.



3.1

4. Drill holes into your wall and attach split batten using appropriate fixings. Depending on the surface and composition of your wall, the size and weight of your final piece, you may need to use heavyweight raw-plugs. If in doubt, please consult a building professional.

5. The lip of the batten which is attached to the wall then fits snugly inside the sub-frame of your frame to present your work securely.



5.



**G** GENESIS  
FRAMING

Nobody frames an image like Genesis

T: +44 (0) 20 7384 6200 E: [info@genesisframing.co.uk](mailto:info@genesisframing.co.uk) W: [genesisframing.co.uk](http://genesisframing.co.uk)