

# Genesis Framing Snap-Front Lightbox Hanging Guide

1. Lay the lightbox on a clean, flat surface with the artwork facing you.

2. With your hands on the inner of the front of the frame, carefully 'snap' open the frame towards the outer side of the frame, one edge at a time. This should open easily in one motion for each side.

3. Remove your artwork using the edges of the print. Place this somewhere safe, away from your working area (to avoid dust or debris on the surface of your print).

4. Looking at your lightbox, still open, you will notice four holes on the inner edge of the snap-frame. These you will use to hang the lightbox.

5. Hanging the lightbox can either be done by measuring the holes and marking these on the wall, or holding the lightbox, still open, to the wall and marking through the holes to the wall.

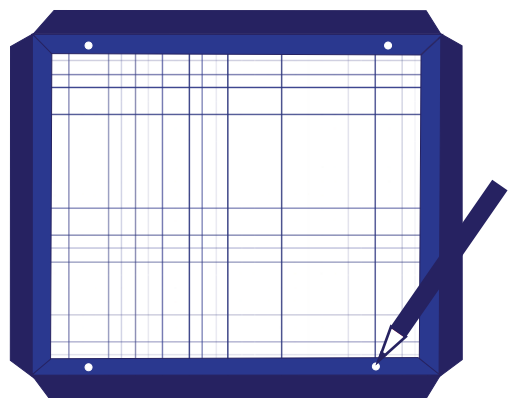
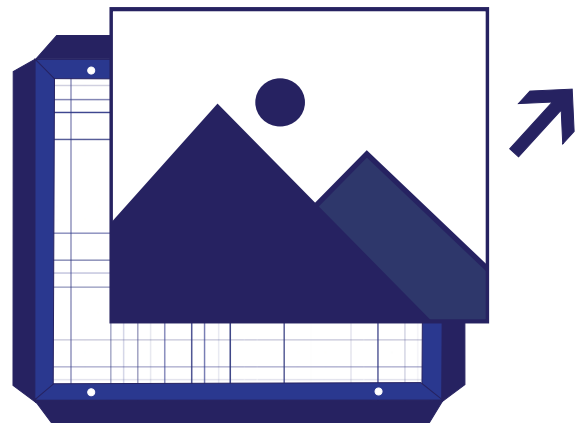
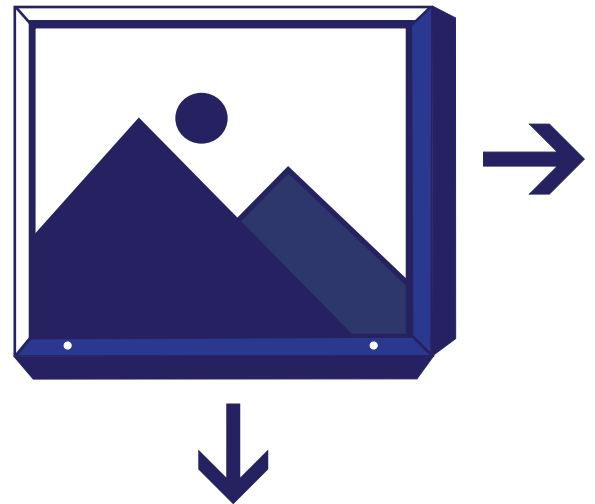
6. Check the measurements you have put on the wall with a spirit level.



7. Depending on the surface and composition of your wall, the size and weight of your final piece, you may need to use heavyweight raw-plugs. If in doubt, please consult a building professional.

8. Attach your screws to the wall through the holes in the lightbox.

9. Replace artwork, attach power cable and enjoy!



**G** GENESIS  
FRAMING

Nobody frames an image like Genesis

T: +44 (0) 20 7384 6200 E: [info@genesisframing.co.uk](mailto:info@genesisframing.co.uk) W: [genesisframing.co.uk](http://genesisframing.co.uk)